

These products are installed directly by adhering to the sub floor surface. In residential applications only, Dryback LVT can be installed over Congoleum UnderFlor. Use Fuzion FuzBond Adhesive for installations over all approved sub floor surfaces.

General Information

• Resilient flooring installation should be scheduled after all other trades have completed their work

- The HVAC systems must be in operation for at least 10 days prior to flooring installation and thereafter to maintain a constant temperature.
- It is important to maintain proper temperature at the time of installation in order to minimize thermal dimensional changes. The sub floor, all flooring material, and adhesive must be conditioned at a constant temperature between 65°F (18°C) and 85°F (29°C) for 48 hours prior to, during and 72 hours after installation. Thereafter, maintain the room temperature between 55°F (13°C) and 90°F (32°C).
- Unopened cartons of flooring should be neatly stacked in the room where they will be installed during the acclimation period. Open cartons just prior to installation.
- When using flooring from two or more cartons, make sure pattern and run numbers found on the carton are the same.
- Mix and install flooring from several different cartons to achieve a random appearance.

floor problems regardless of the underlayment or sub floor material used. **Concrete Floors** must be clean, dry, smooth and free of dust. Level, rough or uneven surfaces, cracks and control joints with a portland cement-based patching compound. Do not install flooring over expansion joints. Moisture vapour emissions must not exceed 5lbs/1000 ft. 2/24 hrs when tested with calcium chloride test kits in accordance with ASTM F-1869 or be greater than 80% RH (relative humidity) when tested with IN Situ Probes in accordance with ASTM F 2170. Surface pH must be between 5 and 9.

Existing Resilient Floors must be single layer, fully adhered and well bonded over an approved sub floor. Remove all wax, floor finish or polish prior to installation. Use embossing leveler to level embossed floors. Do not install new flooring over loose laid or perimeter fastened floors, soft or heavily cushioned floors, cushioned backed flooring, self adhered tile or tile installed below grade level. Adhesive Residue must be completely removed on installations where flooring will be directly bonded to the sub floor. Refer to the Resilient Floor Covering Institute (RFCI) Recommended Work Practices for procedures involving adhesive removal. Do not use solvent or liquid adhesive removers to remove old adhesive residue. These products can have a damaging effect on the new floor and adhesive.

Subfloor

The existing sub floor type and condition, preparation involved, cost and replacement ease, are all important considerations when selecting the best installation method for a particular job. The chart (on next page) provides a list of common sub floors and requirements for each installation method. (See chart on page 2)

Subfloor preparation

All sub floor surfaces must be clean, dry, smooth structurally sound and free of contaminants that can interfere with adhesion or cause discoloration to the floor such as paint, wax, oil, grease, solvent, adhesive residue, curing and parting compounds, sealers and surface hardeners. All surface imperfections should be levelled with a Portland cement-based latex patching compound. Gypsum-based patching compounds are not recommended. Deviations in the sub floor should not exceed 3/16" in 10' or 1/16" in 1'. Sub floor deflection should not exceed 1/360th of the span.

Wood Floors must be structurally sound and free of movement with at least 18" (46 cm) of well-ventilated air space below. An effective vapour barrier laid on the ground surface must be used in a crawl space. Do not install flooring over wood sub floors laid directly on concrete or over sleeper construction laid over concrete sub floors. Sand joints smooth and set fasteners 1/32" (.8 mm) below the surface. Fill underlayment joints wider than 1/32" (.8 mm). Rough, weathered or damaged sub floor panels must be sanded smooth or covered with a suitable underlayment panel. Fuzion Flooring will not assume responsibility for claims related to sub

Subfloor Surface	When Installed over UnderFlor (Residential only)	When Directly Adhered to Subfloor
Suspended Wood subfloor over joist or trusses up to 19.2" OC.	• Single layer Stud-Floor rated panel 23/32" or heavier • Double layer construction, minimum 1" thick	Double layer construction, minimum 1" thick with suitable underlayment panel. Do not install directly adhered over oriented strand board or particle board.
Wood Panel Underlayment	Plywood and other hardwood veneer panels, oriented strand board, NPA rated particle board. The surface must be smooth and structurally sound.	APA rated Underlayment grade plywood and other underlayment grade veneer panels that are intended for use as flooring underlayment and that carry a written warranty by the panel manufacturer.
Concrete, on, above and below grade	With vapor emissions up to 5 pounds	With vapor emissions up to 5 pounds
Lightweight Concrete and Gypsum Topping with a minimum 2000 psi compression rating	Preferred Method Must be smooth, dry and in sound condition. Repair all cracks, holes and damaged areas.	Must be smooth, dry and in sound condition. Repair all cracks, holes and damaged areas. Seal with a sealer/primer recommended by the topping manufacturer. A bond test is recommended. Do not install over powdery surfaces.
Radiant Heated Floors	Preferred Method	Gapping at end joints can occur with temperature fluctuations
Existing Resilient Flooring and Tile	Must be single layer, fully adhered and in good condition. Do not install over heavy cushioned or cushioned backed flooring or tile installed below grade.	Must be single layer, fully adhered, and in good condition. Do not install over heavy cushioned or cushioned backed flooring, tile installed below grade or self adhering tile. Remove wax or polish and level embossed areas with an embossing leveler
Ceramic, Marble and Granite	Tile must be well bonded. Grind high spots and fill low areas to a smooth surface with a latex modified portland cement underlayment.	

Various federal and local government agencies have regulations governing the removal of in place asbestos containing material. If you are considering the removal of a resilient floor covering structure that contains or is presumed to contain asbestos, you must review and comply with all applicable regulations.

Installation Recommendations

Layout

When planning the layout make sure tile and plank joints fall at least 6" (15.2cm) away from joints in the underlayment and or seams in existing flooring.

Plank Installations - Snap a chalk line down the centre of the floor parallel with the long dimension of the room (Fig. 1).

Adjust the chalk line if necessary to avoid narrow pieces at the side walls (Fig. 2).

Apply Fuzion FuzBond Adhesive with a 1/16" x 1/32" x 1/32" notched trowel over one-half of the subfloor up to the centre chalk line. Allow adhesive to dry completely to a tack, normally 30 to 60 minutes, longer in cool or humid conditions.

Carefully install the first row of tile or plank along the edge of the chalk line. Start with a whole plank in the first row. Use 2/3 of a plank to start the second row and 1/3rd of a plank for the third row. Thereafter install planks in a random layout offsetting end joints by at least 8" (Fig. 3).

Avoid using small pieces less than 6" at the wall. Always hold planks in a low angle when positioning them to ensure a tight joint. Complete each row including the cut piece at the end of the row. Always place cut ends against the wall. Complete the opposite side of the room and roll the entire floor in both directions with a 100 pound, three section roller. Restrict to light traffic for the next 48 hours.

Tile Installations - Snap a chalk line down the centre of the floor parallel with the long dimension of the room. Find the centre of the chalk line and snap a second chalk line at a right angle to the centre line. Adjust the chalk line if necessary to avoid narrow pieces at the side walls (Fig. 4).

18" x 36" tiles can be installed in an ashlar layout on a 9", 12" or 18" drop pattern, depending on the desired appearance. A square layout with all 4 corners lined up is not recommended. For ashlar layouts additional chalk lines will be required to establish starting locations in each row (Fig. 5).

Apply Fuzion FuzBond Adhesive with a 1/16" x 1/32" x 1/32" notched trowel over one-half of the subfloor up to the centre chalk line. Allow adhesive to dry completely to a tack, normally 30 to 60 minutes, longer in cool or humid conditions.

Carefully position the first tile in the adhesive at the intersection of the centre and perpendicular chalk lines (Fig. 6).

The tile will bond instantly upon contact so it must be positioned accurately with out sliding it. Press the tile firmly into the adhesive once it is in position. Install square tiles in the first quadrant along the centre and perpendicular lines in a stair step fashion (Fig. 7).

Install rectangular tiles along the centre line in straight rows. Complete each row, including cut pieces at the wall before proceeding to the next row (Fig. 8).

Always hold the tile in a low angle when positioning it to ensure a neat joint with no gaps. At the end of each row the tile will need to be cut to t. Be sure to place cut ends toward the wall. Complete the opposite side of the room following the same procedure and roll the entire floor in both directions with a 100 pound, three section roller. Restrict to light traffic for the next 48 hours.



Fig. 1 - Center line

Adjust the chalk line if necessary to avoid narrow pieces at the side walls (Fig. 2).

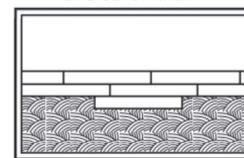
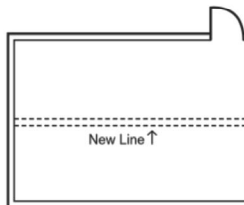


Fig. 3

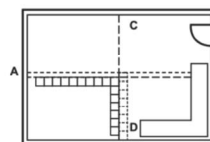


Fig. 4 - Adjust layout of center lines for larger border tiles.

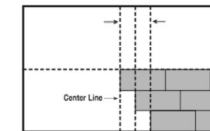


Fig. 5 - Ashlar layout starting lines.

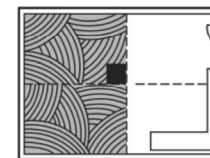


Fig. 6 - Position the first tile at the intersection.

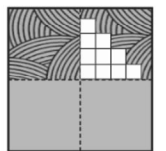
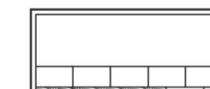


Fig. 7



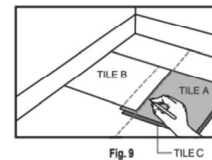
Cutting Flooring

The flooring will need to be cut to t to walls and other vertical surfaces.

Straight Cuts

Place a loose piece directly over the top of the last full tile, making sure all edges are lined up. Use a whole piece as a measuring device, position one edge against the wall and mark the loose piece with a pencil along the opposite edge (Fig. 9).

Fig. 9



Next, place the marked tile on a cutting board. Using a carpenter square as a guide, score the pencil line carefully with a sharp utility knife. Break or cut the tile along the score mark.

Irregular Cuts

Scribe the flooring to irregular shapes such as door trim, pipes, etc. Cut with a utility knife.

UnderFlor provides an alternative to direct bonding to the sub floor and helps to address various sub floor challenges.

General Information

• Condition the room and all flooring materials at a constant temperature between 65°F (18°C) and 85°F (29°C) for 48 hours prior to, during and 72 hours after installation.

Unroll the second sheet and position it with the seam edge butted lightly up to the first sheet. Tape the sheets together with 2" wide clear packing tape or other thin single face plastic tape available through supply stores and most home centres. Apply the tape, centred directly over the top of the seam edges. Roll the tape with a steel seam roller.

Finished Flooring Installation

Establish the layout as previously described and snap centre and perpendicular chalk lines as required making certain that the finished flooring joints are at least 2" away from the seams in the UnderFlor.

Spread Fuzion FuzBond Adhesive using a 1/16" x 1/32" x 1/32" notched trowel over one-half the floor up to the centre line. Do not apply excess adhesive. Allow adhesive to dry completely to a tack, normally 45 to 60 minutes, before installing flooring.

When installing flooring over UnderFlor, slight growth (buckles) may occur immediately after adhesive application. This is normal and will not affect the finished flooring installation. Install flooring following installation instructions as previously outlined for direct bond installation. Remember to allow a 1/4" expansion space around the perimeter of the room. If necessary to adjust or remove a tile or plank, use a heat gun to warm it up first. Complete the opposite side of the room following the same procedure.

- All UnderFlor or underlayment and finished flooring must be installed with a 1/4" space around the perimeter of the room to allow for expansion and contraction of the flooring system and sub floor. Under cut floor casing and slide finished flooring under for a finished appearance.
- Use Fuzion FuzBond Adhesive for installing products over UnderFlor. Hard setting adhesives should never be used with UnderFlor.

Underpad Installation

Install UnderFlor with the vinyl side down just prior to installation of finished flooring. Always install UnderFlor running perpendicular to the long dimension of the product. Install UnderFlor with joints positioned at least 4" away from the seams in the underlayment. Install planks with staggered end joints positioned at least 2" away from the seams in the UnderFlor (Fig. 10).

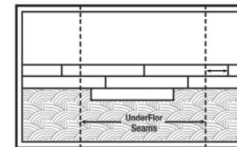


Fig. 10

Thoroughly sweep the floor to remove all loose dirt and debris. Unroll the first sheet and trim it allowing a 1/4" space between the edge of the sheet and the wall.

Warranty Information

2mm Dryback LVT
15 Year Residential Limited Wear Warranty
5 Year Light Commercial Limited Wear Warranty

3mm Dryback LVT
Lifetime Residential Limited Wear Warranty
20 Year Light Commercial Limited Wear Warranty

For complete warranty details, visit:
www.fuzionflooring.com/drybackwarranty